



DEWEI CARBIDE

硬质合金抛料头

Crusher Hammer Inserts



浙江德威硬质合金制造有限公司
ZHEJIANG DEWEI CEMENTED CARBIDE MANUFACTURING CO.,LTD

以真诚连结客户，以创新架构未来

Contacting customers with sincerity, and creating the future by innovation

浙江德威，坐落于“中华全国建工基地”之称的乐清市芙蓉镇，依山傍海，风景秀丽，距离甬台高速雁荡山出口仅十公里，离温州机场 80 公里，货物到达宁波港仅两个多小时，交通便利。

本公司设计、开发、制造的硬质合金及其成品工具以优良的品质、合理的价格和优质的售后服务深得国内外客户的赞赏。公司已按照 ISO9001 质量保证模式建立了质量体系。其硬质合金制品以国际上先进的低压烧结技术、成熟的热处理工艺保障，能够为客户提供满意的优质产品。

德威公司秉承“以真诚连结客户，以创新架构未来”的企业宗旨，把人才战略放在首位，加强管理，不断提升产业层次，竭诚欢迎海内外新老客户惠顾。

Zhejiang Dewei is located in "China national hammer drill tool base" Furong Industrial Park, Yueqing city, near mountain and sea with beautiful scenery. There have convenient transport facilities, only 10KM away from Yandang exit Yong-Tai-Wen expressway, 80KM from Wenzhou Airport, and about 2 hours for delivering goods to Ningbo seaport.

By virtue of its high quality, reasonable price, and perfect aftersale service, the tungsten carbide products and finished tools designed, developed, and produced by the company have got high appreciation from clients home and abroad. The company has established a quality assurance system according to the ISO9001, and ensured by the internationally advanced HIP sintering technic and Heat Treatment technic, its tungsten carbide products are of high quality to meet its clients' requirements.

The company, by virtue of its aim "Contacting customers with sincerity, and creating the future by innovation", is now focusing on enhancing management and industrial level. Setting an enterprise talents strategy has been given high throughout the management. We sincerely welcome the patronage of domestic and foreign customers.

Carbide Grades

牌号 Grade	晶粒度 Grain Size	粘结相 Binder (%)	硬度 Hardness (HRA)	抗弯强度 TRS (Mpa)	密度 Density (g/cm)	牌号说明 Grade Description	应用领域 Application		
							普岩钎具 Rock Drilling	截齿 Conical Bits	石油开采 Oil Exploitation
PDK20.1	中 medium	8	89.5	2800	14.65-14.80	具有良好的耐磨性，适用于各种规格的冲击钻、潜孔钻及三牙轮钻头。 Can be used for making compacts of various percussion, DTH bits and tricone bits for drilling medium hard formation.	●		
DK30.3	中 medium	9	88.8	2800	14.55-14.70	适用于中韧性需求的采矿，石油开采作业，主要用于牙轮钻头。 Can be used in mining applications where moderate toughness is required. Main application include compacts of tricone rock bits for oil and gas drilling.			●
DK30.4	粗 coarse	9	87.5	2800	14.55-14.70	具有良好的韧性和抗疲劳性能，适用于采矿类截齿、三牙轮钻头用齿。 Can be used for bits of mining and tunnelling. It has excellent toughness and thermal fatigue property.	●		○
DK35.1	中 medium	10	88.3	2800	14.45-14.60	适用于中韧性需求的采矿，石油开采作业，主要用于牙轮钻头。 Can be used in mining applications where moderate toughness is required. Main application include compacts of tricone rock bits for oil and gas drilling.			●
DK20.0	粗 coarse	10	87.5	2800	14.40-14.60	具有良好的韧性和抗疲劳性能，适用于采矿类截齿、三牙轮钻头用齿。 Can be used for bits of mining and tunnelling. It has excellent toughness and thermal fatigue property.	●		○
DK40.1	中 medium	11	88.0	2800	14.35-14.50	适用于中韧性需求的采矿，石油开采作业，主要用于牙轮钻头。 Can be used in mining applications where moderate toughness is required. Main application include compacts of tricone rock bits for oil and gas drilling.	●		○
DK40.2	粗 coarse	11	86.8	2800	14.35-14.50	具有良好的韧性和抗疲劳性能，适用于采矿类截齿和盾构刀头。 Can be used for bits and shield cutter of mining and tunnelling. It has excellent toughness and thermal fatigue property.	●	○	

● 推荐牌号 Recommended Grade ○ 次选牌号: Second Selection Grade



1 DEWEI CARBIDE

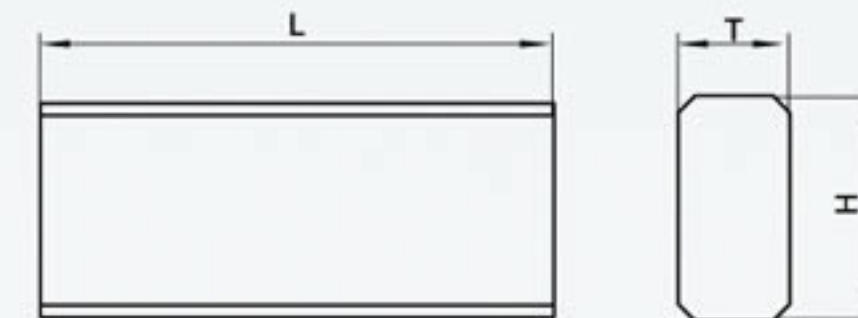
抛料头

Crusher Hammer Inserts

规格 Type	型号 Dimension(mm)			
	L	T	H	a
HI010501220	50	12	20	1x45°
HI010551220	55	12	20	1x45°
HI010601223	60	12	23	1x45°
HI011001223	100	12	23	1x45°
HI011051020	105	10	20	1x45°
HI011101220	110	12	20	1x45°
HI011441223	144	12	23	1x45°
HI011601223	160	12	23	1x45°

※注:可按客户要求生产

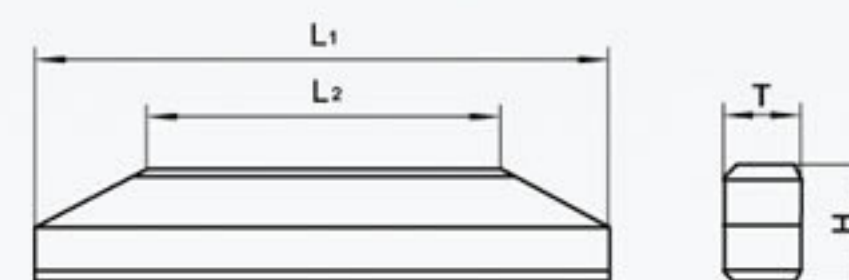
※ Note:Can be customized according to customer's requirements



规格 Type	型号 Dimension(mm)			
	L	T	H	a
HI021851223	185	110	23	1x45°
HI021891323	189	110	23	1x45°
HI021891523	189	110	23	1x45°
HI022191423	219	118	23	1x45°
HI022201523	220	112	23	1x45°

※注:可按客户要求生产

※ Note:Can be customized according to customer's requirements



规格 Type	型号 Dimension(mm)				
	L	T	H	R	a
HI031882008	188	20	8.0	406	1x45°
HI031882508	188	25	8.0	406	-
HI031901709B	190	17.5	9.5	500	1x45°
HI031901707A	190	17.5	7.0	500	1x45°
HI031931507	193	15.0	7.0	522	-
HI032302308A	230	23	8.5	1020	1x45°
HI032752308A	275	23	8.5	987	-

※注:可按客户要求生产

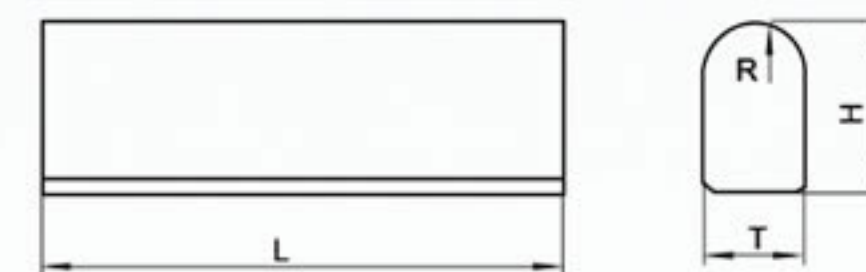
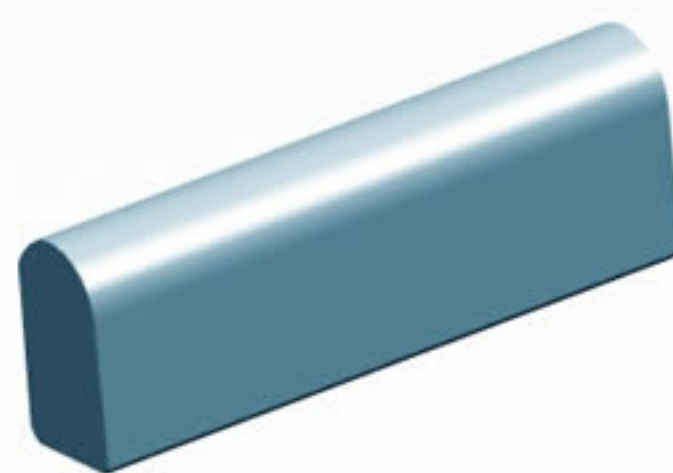
※ Note:Can be customized according to customer's requirements



规格 Type	型号 Dimension(mm)				
	L	T	H	R	a
HI040521019A	52.5	10	19	15	1x45°
HI040540918B	54.5	9.5	18	5	1x45°
HI041051020	105	10	20	5	1x45°

※注:可按客户要求生产

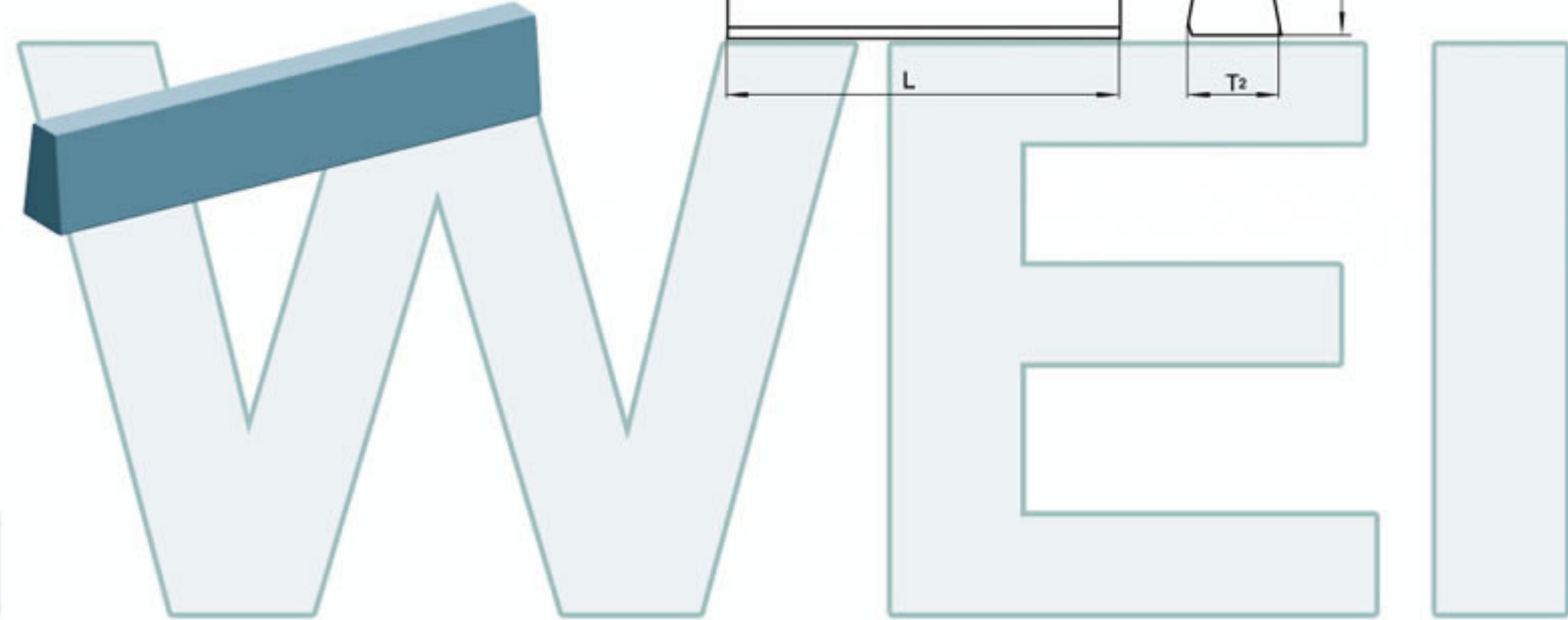
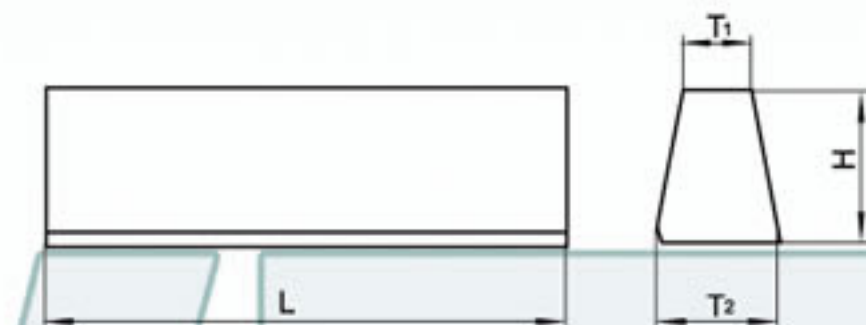
※ Note:Can be customized according to customer's requirements



规格 Type	型号 Dimension(mm)				
	L	T ₁	T ₂	H	a
HI051201613	120	12	16	13	R3
HI051651220	165	8	12	20	-
HI051771725	177	14.8	17	25	1x45°
HI052501320A	250	11.4	13.5	20	-
HI052601220	260	8	12	20	-

※注:可按客户要求生产

※ Note:Can be customized according to customer's requirements





浙江德威硬质合金制造有限公司

ZHEJIANG DEWEI CEMENTED CARBIDE MANUFACTURING CO.,LTD

地址:中国·浙江·乐清市芙蓉工业区

Add:Furong Industrial Park,Yueqing,Zhejiang,China

电话 (Tel):0086-577-62298508 62298502 62298577

传真 (Fax):0086-577-62298505

邮编 (P.C):325612

Http://www.cn-dewei.com